



COPRI Ports 2025
Providence, Rhode Island

PROVPORT Master Plan

ENVISIONING THE NEXT 30 YEARS

Transformed, Renewed, Revitalized



Kayla Newton, P.E.
Kayla.Newton@gza.com
Kevin Williams, AICP, PP
Kevin.Williams@gza.com
www.gza.com

The **ProvPort Master Plan** outlines a comprehensive vision to grow the Port's industries and infrastructure in a sustainable, resilient, and community-focused way over the next **30 years**.



This Master Plan will identify capital investments to be made within 5-year intervals over the next 30 years to present a phased build-out plan that incorporates financial options, proposed land uses, and alignment with the long-term objectives of the Port, City of Providence, and the surrounding community. The ProvPort Master Plan is structured into three phases:

❖ Phase 1: Short-Term (2025 – 2030) – Laying the Foundation

Planning, early investments in sustainability, quick-win community projects, and positioning ProvPort for future growth industries.

❖ Phase 2: Mid-Term (2031 – 2040) – Expansion and Acceleration

Major capital projects to expand capacity and resilience, full-scale deployment of green technologies, and scaling up workforce and community programs.

❖ Phase 3: Long-Term (2041 – 2055) – Maturation and Innovation

Achieving net-zero, adapting to new market realities, and ensuring the Port and community prosper sustainably for the next generations.



What's the difference between ProvPort and the Port of Providence?



ProvPort, Inc., was created in 1994 as a nonprofit chartered in Rhode Island to operate the former Providence Municipal Wharf **within the Port of Providence**. The Port of Providence is New England's second biggest deep-water port. ProvPort is operated by **Waterson Terminal Services**.

- ❖ **135+** Acres
- ❖ **27** Leased and Common Parcels
- ❖ **14** Active Leases
- ❖ **4,200** Feet of Berth
- ❖ **50,000** Square Feet of Covered Storage
- ❖ **20+** Acres of Open Lay-Down



OBJECTIVES OF THE PROVPORT MASTER PLAN:



Workforce Training & Jobs

Leverage Port expansion and new industries to create well-paying **jobs for Rhode Islanders**. Develop training pipelines (in partnership with unions, schools, and colleges) to build a **skilled maritime and clean-energy workforce** drawn from the local community.



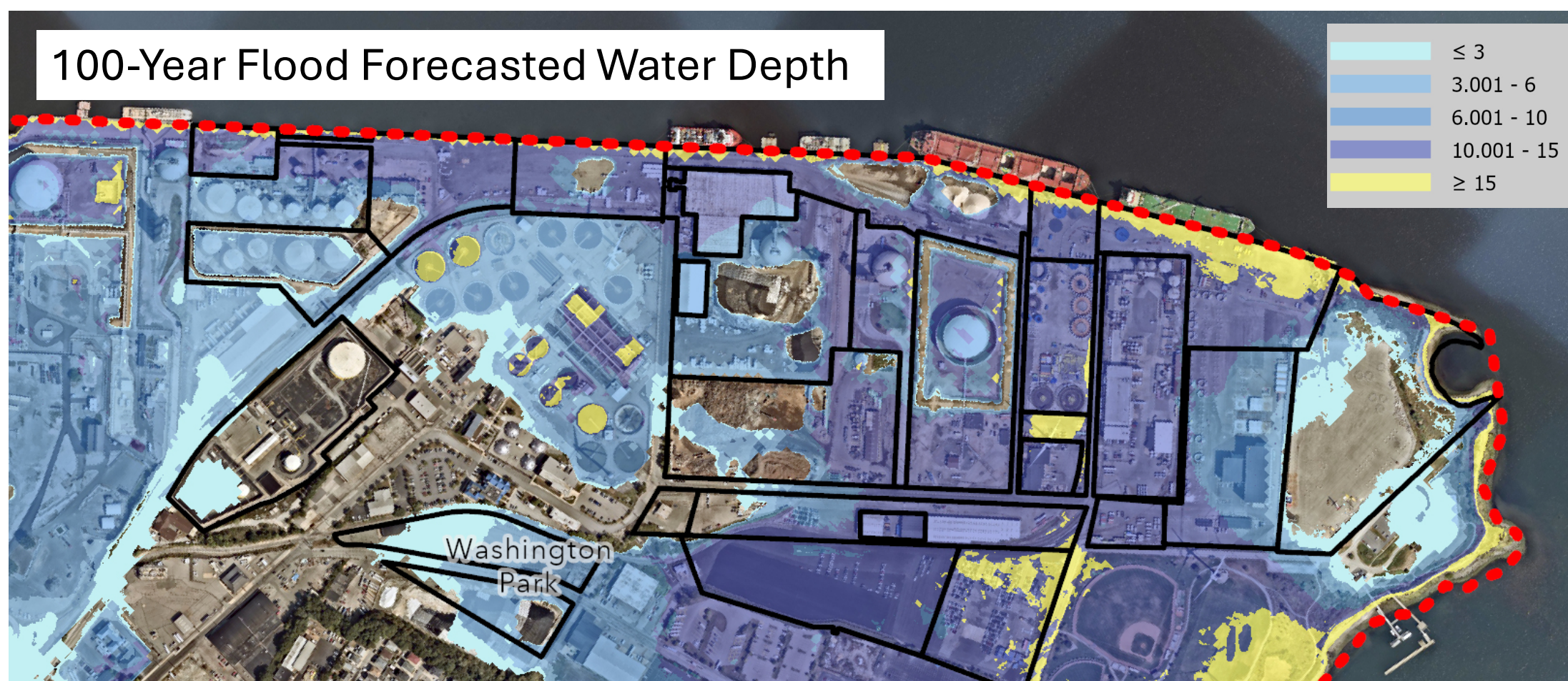
Economic Growth in Emerging Industries

Position ProvPort to **capitalize on growth sectors** (like offshore wind and renewable energy technology) that will drive regional demand, while continuing to support core industries needed in Rhode Island's economy and incorporate **new market opportunities**.



Climate Resilience

ProvPort is vulnerable to sea-level rise, storm surge, and flooding. A resilient port is essential to ensure continuity of operations and safety of surrounding communities. This Master Plan integrates the **Infrastructure Resilience Planning Framework (IRPF)** developed by the U.S. Department of Homeland Security, as applied through a collaboration with the **University of Rhode Island Coastal Resilience Lab**.



Incorporating IRPF principles ensures that the Master Plan takes a comprehensive approach to natural hazard resilience, with a particular emphasis on critical infrastructure systems and their interdependencies.



Community-Centered Development, Health Focus, and Transparent Governance

Mitigate environmental impacts on the adjacent **Washington Park** and **South Providence Communities**. Improve air quality and health outcomes. Invest in community benefit projects to ensure the Port's growth **benefits the surrounding neighborhoods**. Establish an **inclusive governance process** with regular community input, robust public communication, and **accountability**.



Waterfront Access and Amenities



Integrate **public access** to the waterfront (e.g., parks, walking paths, educational lookouts) wherever feasible, without compromising port security or operations. Enhance the waterfront for **recreation and quality of life**, consistent with Providence's broader waterfront plans.



Net-Zero & Green Infrastructure

Transition port operations toward **net-zero** greenhouse gas emissions by **2050**, in line with Rhode Island's Act on Climate mandates.

Upgrade infrastructure with clean energy, electrification, and climate resilience measures.



Scan to learn more!

In association with



PROVPORT



Waterson Terminal Services
PORT OF PROVIDENCE, RHODE ISLAND

In collaboration with



Known for excellence.
Built on trust.



DESIGN UNDER SKY